



ELY
CATHEDRAL

Annual Review 2025



Joyfully proclaiming the love of God in worship, outreach, welcome and care



A message from the Very Reverend Mark Bonney, Dean of Ely DL



This annual review is particularly special for me personally because it will be the last one I write a forward for, as I prepare to retire in the middle of 2026 after fourteen years as Dean of Ely, and having the enormous privilege of leading the amazing community that is Ely Cathedral.

This review highlights the very special team of staff and volunteers we have here, who enable such a variety of activity and enterprise to take place.

At the heart of all we do is the worship of Almighty God, and over my fourteen years here that has always been my priority, and I am hugely grateful to all our musicians and the regular worshipping community who sustain that.

Annual Review photos: Keith Heppell, Geoff Robinson, James Billings, Andrew Sharpe, James Newton, Luxmuralis.

It is why we felt so very deeply the untimely death of **Canon Jim Garrard** in December, and are indebted to him for his oversight of that fundamental area of our life - we miss him greatly. **Canon James Reveley** will be taking up the role of Precentor after Easter 2026.

In April we were delighted to welcome **Canon Jenny Wright** as the new Canon for Learning and she has settled in well. We are also delighted that a new Bishop of Ely has been announced, **Bishop Sarah Clark** (currently Bishop of Jarrow and acting bishop of Durham), and we really look forward to welcoming her to the Cathedral and for all that she has to offer the Diocese. We are grateful for **Bishop Dagmar's** leadership during the vacancy and we wish her every blessing as she moves to be the Bishop of Edinburgh.

The highlights for me personally over the past year have been the Home & Garden Show which will now be a regular event alongside the ever popular Christmas Fair. I'm pleased we have been working so hard to face the challenges of Net Zero – there's a long way to go, but the air source heat pump for the Almonry Kitchen is a major step forward. The cleaned High Altar reredos is wonderful.

I am also so very pleased by the priority given by everyone to the safeguarding of children and vulnerable adults. It is so important that the Cathedral is a safe environment and that if anyone has a safeguarding concern they feel able to report it.

So, I want to conclude with a huge thank you to everyone at the Cathedral, particularly to my Chapter colleagues who have been a constant support, and to all the staff and volunteers who are celebrated in these pages. May this wonderful Cathedral long continue ***"Joyfully to proclaim the love of God in Worship, Outreach, Welcome and Care."***

A handwritten signature in black ink, reading 'Mark Bonney'. The signature is written in a cursive style with a long horizontal line underneath.

The Very Reverend Mark Bonney, Dean of Ely DL



A new event made its debut -
The Home & Garden Show



We welcomed Canon Jenny Wright



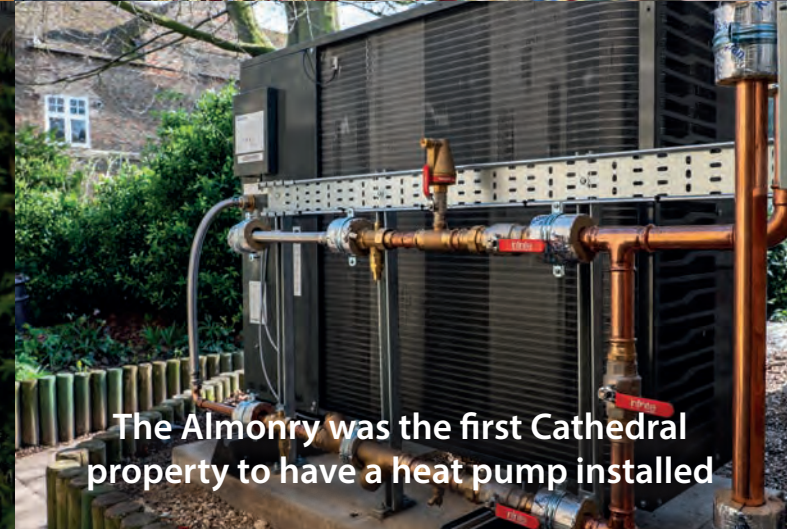
Works were completed on the reredos



The Cathedral Shop celebrated
50 years in business!



2025 Highlights



The Almonry was the first Cathedral
property to have a heat pump installed



We hosted the incredible Threads
Through The Bible Exhibition



Dame Emma Thompson joined
Ben Elton at a book event



Ely's first ever Observation Wheel was a
major attraction at the Christmas Fair

2025 Overview

One of the first things we did in 2025 was to finish the planning and fundraising stage to replace a gas boiler with an air source heat pump in the Almonry Kitchen restaurant. To make life more interesting for ourselves, we commissioned the work to take place in the same six-week period that we closed the restaurant for refurbishment. And we did this all at the same time as entering into a new collaboration with the Cambridge Dining Company. It was complicated work at the time, but we couldn't be happier with the outcome. We've radically reduced carbon dioxide emissions associated with heating the space. Feedback from customers is overwhelmingly positive. And we're greatly enjoying working with the Cambridge Dining Company. We're grateful to the Archbishop's Council and Ely Cathedral Trust for funding the decarbonisation part of this work.



The Almonry Kitchen

An incidental but important function of Ely Cathedral is that we're a landlord, with a range of retail units in Ely, mainly on the High Street. We aim to attract retail tenants that are independent, local and add to the attraction of Ely as place to visit. We all hear a lot of gloomy news about the state of Britain's High Streets. It's therefore fantastic that throughout 2025 all of our retail units were fully let by great local businesses including Victoria's Cheese, Cow on the Ice, the Eel Catcher's Daughter, Odyssey Games and Nicolas Hythe Interiors.

Technology & Digitalisation

Building on the core cabling infrastructure replaced in 2024, we have continued to modernize our networking capabilities across the site. The primary objective remains the cultivation of a stable, high-capacity, and reliable network to support our mission in the digital age.

Key achievements this year include:

Visual & Accessibility Upgrades: Supported by private funding, we have successfully replaced and upgraded the digital display units on the Cathedral floor. These high-specification screens offer superior visibility for text and images and feature height-adjustable mounting to ensure better accessibility for all visitors.

Broadcast & Connectivity: To further enrich the experience for those joining us remotely or for special events, we have overhauled our back-end streaming system, ensuring better reliability and quality of broadcast. Furthermore, our telecommunications have been migrated to the Wildix cloud platform, providing Cathedral staff with a more flexible and resilient communication suite.

Estate-wide Modernization: In anticipation of the retirement of legacy software, we completed a comprehensive rollout of Windows 11 across the entire estate. This proactive transition ensures our systems remain secure, supported and future proofed.

Overall, it has been another year of major investment, strengthening reliability, performance, and security across the Cathedral's IT systems.



Cathedral screens 5

Worship



The Cathedral's fundamental purpose as a house of prayer continues to be expressed, as it has been for countless generations, through the rhythm of daily worship. Morning and Evening Prayer book-end each day and, together with the Eucharist, are the spiritual heartbeat of our community. A continuous flow of visitors and pilgrims is always adding to this living tradition - pausing to pray, lighting candles, leaving requests for intercession, and joining in our corporate worship.

In addition to services marking the cycle of Christian year, we hosted the popular annual Animal Service, a Back-to-School Service, a Civic Service for the Mayor, and the County Justice Service. Services of Ordinations and for the Licencing of Lay Ministers, and services for the new Diocesan Youth Pilgrimage also took place.



Christmas Tree Lights Switch-On service



During the past year, the whole Cathedral community was shocked and saddened by the sudden death of our friend and colleague, **Canon Jim Garrard**, who had served faithfully as Precentor since 2008. His oversight of our worship shaped the life of this Cathedral in profound ways. Many hundreds gathered for his funeral early in 2026, where his immense contribution to our shared life was remembered with gratitude.

2000+
Children and families
attended a Crib Service
on Christmas Eve

206
Services were live
streamed on YouTube,
gaining 110,000
global views

107,527
Worshippers were
recorded in person at
Ely Cathedral in 2025



Animal Service

Music

"Choral music is not one of life's frills. It's something that goes to the very heart of our humanity, our sense of community, and our souls."
Sir John Rutter, Music Patron, Ely Cathedral





Choristers enjoying the Christmas Fair carousel

2025 started with a celebration of our splendid new lighting system through two special Son et Lumière events involving all of our choristers. It went on to be a record-breaking year for them: with 50 boys and girls altogether, the choir stalls were at times full to bursting! We also welcomed our youngest ever girl choristers (aged 7), meaning that all boys and girls will now start and end their choir journey at the same ages.

It was the boy choristers' turn to tour in 2025, visiting our partner diocese in Northern Germany. As well as fearlessly climbing some of Europe's tallest church towers (leaving the adults far behind) the boys visited a World War Two submarine... and even played lasertag!

There are even more Ely Imps than choristers: 60 children came and rehearsed enthusiastically every week for events including a special Evensong, Harvest Songs of Praise, and of course our sold-out Hark the Herald concert at Christmas. One even bigger number to finish: around 100 adults also sang regularly every week in ECOS or the Cathedral Choir (and several hundred more in visiting choirs), enabling glorious choral music to be heard in the Cathedral almost every day.



Graduate Organ Scholar - Andrew Liu



Choir Tour to Germany



The Ely Imps

The motors in the Cathedral organ blowers have the same horsepower as a small tractor!

The choristers get through about 50kg of pre-service biscuits every year - Custard Creams are their favourite!

Around 1500 choristers formally sing in UK Cathedrals each year.

Outreach



Learning and Families

The most popular activities continue to be school visits. Over the past year, we have engaged with a number of new schools while further developing our provision for secondary students. Visits from secondary schools now make up almost half of all school visits, a significant increase from previous years when they represented only a small proportion.

Our Chapters Group also expanded, leading to the creation of a second group for older participants. We now run two groups, both nearly at capacity, working with more than 35 children every fortnight. Together, they explore themes such as philosophy, history, ethics, and social justice through texts including *Frankenstein* and *Tom's Midnight Garden*.

Discovery Mornings continued to be extremely popular with families. Around 100 children have attended sessions at the Cathedral, exploring themes connected to the building and its faith. We were particularly struck by the level of enthusiasm for learning about the Gurney Stoves, which captured the curiosity of many young visitors last year.

3000

**Students from 46 schools were welcomed
by the Learning Team**

7377

Children were welcomed as visitors

***Schools from an increasingly wide geographical
area - including North Norfolk, South Essex
and London - are now bringing groups
to the Cathedral.***



History Club - The Tudors

The History Club continues to inspire curiosity and enthusiasm within our Home Educators group. The Tudor sessions explored a wide range of topics, including work, theatre, medicine, and exploration, all connected to the Cathedral's own past. These sessions encourage creativity through interactive learning and hands-on activities.

Discovery Mornings

Discovery mornings invite children and their families to explore the Cathedral together. The Victorian Inventions session, inspired by its Gurney Heaters, included making decorations while learning how the Victorians restored Ely Cathedral.

Leaning Lates

Leaning Lates are a series of interactive evening sessions for adults who want to explore the Cathedral's history in a relaxed, sociable setting - over a glass of fizz and plenty of laughter. The Physick Garden evening focused on medieval medicine, and making tinctures, infusions, and facial scrubs.



Volunteering

Volunteers continue to play a vital role at Ely, offering their time and skills to support the Cathedral. Their dedication not only enhances the experience of visitors and worshippers but also strengthens the Cathedral's connection to the wider community, reflecting a shared commitment to service and hospitality.

In March, we welcomed 10 candidates - a mix of internal and external applicants - to participate in a brand-new, 10 week, Guide Training Course.

An exciting new Biodiversity Volunteer Team dedicated to caring for the trees in the Dean's Paddock and looking after the wildflower bed, became the newest team of Cathedral volunteers.

At the end of National Volunteers' Week in June, around 125 people joined us for our annual Volunteers' Evensong - a wonderful celebration and acknowledgement of our volunteer community.

48

**New people joined the
volunteering community**

15,108

**Hours were collectively
dedicated to the Cathedral
by 10 Volunteer Teams - the
equivalent of 630 days**

6,600

**Hours were covered
by our volunteer
stewards, bedesman
and welcome team**



Community Engagement



The Coat of Hopes

A patchwork garment representing climate grief and hope, arrived at Ely Cathedral in February as part of an ongoing pilgrimage across Britain. Created from blankets, it travels to COP climate summits and significant locations, inviting people to wear it and add their own stories of climate action and ecological concern.

Junior Church Sleepover

Several intrepid members of Junior Church spent the night sleeping in the Cathedral at the end of August. They gathered for a picnic tea in the Bishop's garden and processed into the Cathedral for night prayers in the choir before settling into sleeping bags for hot chocolate and Cathedral-related bedtime stories. Breakfast was held in the Lady Chapel and a 'seven sacraments hunt' found them searching around several of the chapels for clues before joining us for the 10.30am Sunday Eucharist.

Advent Sleepout

Thirty people from the Cathedral and wider Ely community took part in the Advent Sleepout on a cold evening in December - participants included Bishop Dagmar and her dog Tilda, Canon James and Canon Jenny, plus Cathedral staff and volunteers. Just under £4000 was raised in aid of the national homelessness charity CRISIS, and the Cambridge Churches Homelessness Project, a local organisation who help churches support people experiencing, or at risk of homelessness.

Youth Event

Building on the success of the Youth Pilgrimage, Ely Cathedral hosted a Youth Event in November. These gatherings bring together young people in school years 7 to 13, from across the Diocese. The Cathedral offers the perfect setting for a fun and interactive evening of games, creative activities and food, concluding with a candlelit Compline. The event was free to attend and welcomed over 60 young people and church leaders.

Welcome



The Visitor Experience

In 2025, we continued to find new ways to engage and inspire visitors. The Visits Team remained central to the Cathedral experience, offering a warm welcome, leading tours and sharing their expertise.

Guided tours saw sustained growth, particularly the newly introduced Special Interest series - Stories of Ely Cathedral - which, alongside increased use of digital guides, have created a more flexible and inclusive experience for visitors.

Over 17,000 visitors joined in-person tours, while more than 25,000 made use of the multimedia digital guides to explore the Cathedral at their own pace and in their preferred language. The Hidden Heights Tours remained highly popular, selling out throughout the summer.

We were encouraged to see an increase in group visits of over 24%, with students and language groups accounting for 48%. We are also keen to report that 30% of visitors benefited from free entry, reflecting our commitment to accessibility.

One of the most tangible achievements in 2025 was the enhancement of signage and wayfinding. Illustrated maps and notice boards have been well received, creating a clear and consistent identity across the Cathedral precinct. New leaflet designs and a simplified floor map have further improved presentation while supporting our sustainability goals.

“From the moment I entered the Cathedral door, I felt embraced and comforted. As we walked along and learned about the incredible story of Ely Cathedral, I felt very much at peace, and so grateful that this special place has been so lovingly attended to and cared for. It was truly one of the most special experiences of my life. I’ve returned home with renewed spirit and strength to help make my home, my community, and our world a better place.”

Cathedral Visitor



5,500
People were
welcomed over
Harvest weekend

17,000
Visitors enjoyed a tour
with a Cathedral Guide

25,000
People benefited from a
Multi-Media Guided Tour

The Cathedral Shop

The Cathedral Shop has had a positive year, continuing to support the life and mission of the Cathedral in offering a warm welcome to visitors and worshippers alike.

A highlight of 2025 was celebrating the shop's 50th birthday! A key milestone for any retail business, and one we have been very proud to reach. This could not have been achieved without the dedication and commitment of our volunteers and staff whose professionalism and friendliness has greatly enhanced the visitor experience over those years.



The Cathedral shop welcomed
over **60,000** customers

Events

In 2025, Ely Cathedral hosted nearly 70 events, attracting around 56,200 visitors, and further cemented its role as both a place of worship and a cultural venue.

From exhibitions and concerts to book launches, light shows, corporate dinners and silent discos, the Cathedral's events programme continues to blend heritage with modern events, offering experiences that inspire and captivate audiences from all generations.

Our mission is to create opportunities for people to engage with the Cathedral in new and meaningful ways - whether encountering art, music, literature, or community gatherings - and to welcome both long-standing supporters and first-time visitors.

Through its carefully curated events programme, we continue to demonstrate how a historic sacred space can remain relevant, welcoming, and inspiring in the modern world. By blending art, music, literature, and community engagement, the Cathedral invites people of all ages and backgrounds to experience its beauty, heritage, and spirit, making every visit an opportunity for celebration, and connection.



Clothed in Glory **Exhibition** **February 2025**

Ely Cathedral hosted the first-ever public exhibition of exquisite embroidery from the archives of the Community of the Sisters of the Church. The exhibition featured a wide range of embroidery techniques and styles found on ecclesiastical vestments. It attracted a diverse audience including, specialists in ecclesiastical garments, as well as sewing clubs and embroidery groups from all over the UK.

Threads Through the Bible **Exhibition** **May & June 2025**

One of the highlights of 2025 was the *Threads Through the Bible* exhibition. This remarkable display of textile art brought biblical stories to life, blending craftsmanship, history, and reflection.

Visitors were invited to explore the narratives of scripture through intricate designs and modern interpretations, creating a thoughtful and immersive experience in the Cathedral's setting.

Home & Garden Show **July 2025**

In July, the Cathedral launched its first Home & Garden Show, welcoming 7,500 visitors over three days.

The event featured over 120 exhibitors, with interactive talks and live demonstrations, transforming the Cathedral grounds into a lively destination for garden inspiration and home décor ideas. This new addition to Ely's events calendar successfully attracted audiences and will continue to grow into 2026.

Music Events

Music remains at the heart of the events offering. In 2025, the programme included a wide variety of genres to appeal to diverse audiences. Tribute concerts consistently attracted visitors who might never otherwise step inside, offering a fresh way to experience this historic space. Choral and orchestral performances brought exceptional live music to audiences, featuring acclaimed ensembles alongside much-loved local groups.

Hospitality Centred Events

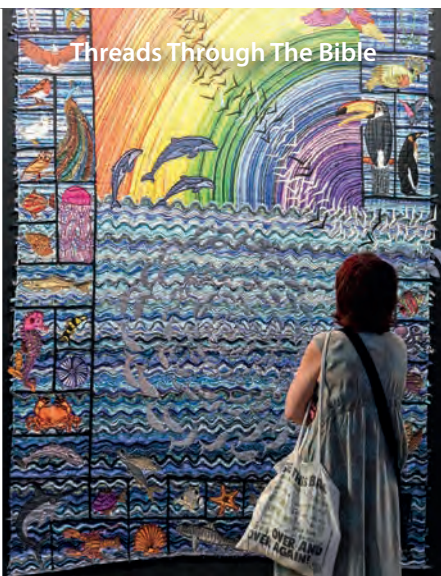
2025 saw us host a few large-scale dinners, combining fine dining with the grandeur of the historic spaces.

Guests include the US Air Force and the Pymoor Stockman's Club. These dinners offered unique experiences: guests enjoyed exquisite food and hospitality whilst surrounded by the Cathedral's awe-inspiring atmosphere.

"Ely Cathedral transforms every event into an unforgettable experience - where community and culture meet."



Clothed in Glory



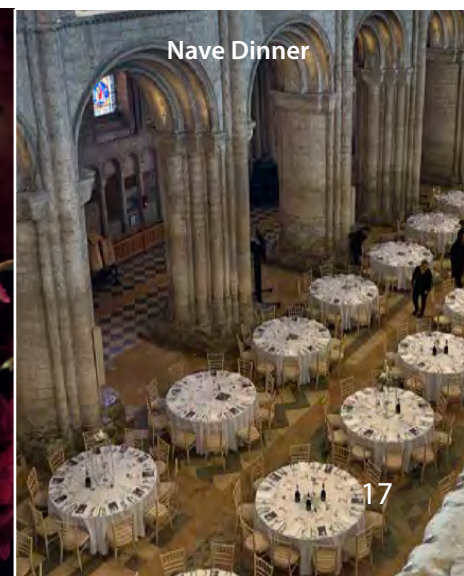
Threads Through The Bible



Home & Garden Show



Martin Kemp - Back to the 80s



Nave Dinner

Care



Decarbonisation Works

Early 2025 saw the installation of an air source heat pump and associated works at the Almonry, timed with redecoration and refurbishment in advance of re-opening under Cambridge Dining Co management. This has been a major advance in our carbon-zero goals and achievable without compromising the historic fabric of this Grade I listed building, thanks to excellent contractors and consultants working on this.

Lady Chapel South Elevation

The external south elevation of the Lady Chapel was scaffolded to access the upper central area. Rainwater goods were checked, plant growth removed, downpipe repaired and re-installed, all made good and the area re-pointed. The access was then used to help progress a wider programme of works here planned for 2026 to address conservation, repairs and rainwater goods modifications to elevations around the Processional Way and courtyard. All areas were then expertly scanned and recorded to provide measured survey drawings and data to this end.

High Altar Reredos

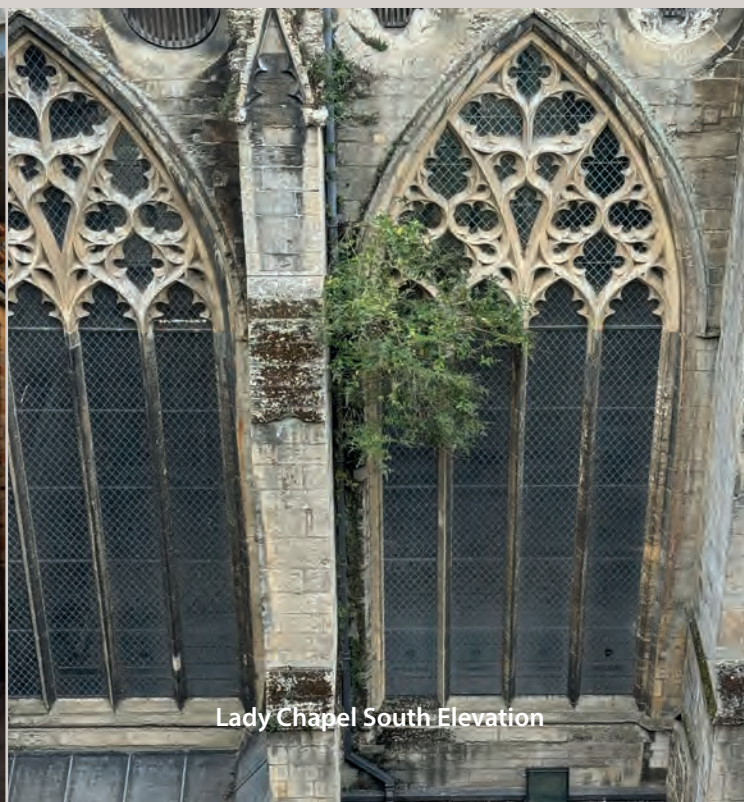
Careful conservation of the High Altar Reredos was carried out in the autumn. A team of conservators from Taylor Pearce worked expertly and quietly on the scaffolded reredos, behind mesh printed with a high-resolution photograph of this Victorian masterpiece. Delicate surfaces were carefully cleaned and consolidated and missing attributes replaced after much research. The results are excellent and bring the piece to life with newly revealed detail and colour.

Electrical Works

Contractors Lowe & Oliver returned to the Cathedral in the autumn to carry out a full electrical inspection of the building, followed by a programme of remedial works. Having carried out extensive works during the recent lighting project, they were well-placed to complete all necessary additional upgrades, with acquired in-depth knowledge of the place. This was a significant project in its own right, achieved by working carefully around the busy life of the Cathedral, minimising disruption as far as possible.



Decarbonisation Works



Lady Chapel South Elevation



High Altar Reredos

Ely Cathedral Environment Group



Creation care remains at the heart of all we do, and throughout 2025 we continued our commitment to walking in step with nature and taking meaningful action on climate change. As an A Rocha Eco Church Gold Award holder, members of the Ely Cathedral team were invited to assess other Gold Award applicants, including the Peterborough Quakers. We were pleased to recommend them for the award after witnessing their care for creation in action, and later welcomed them to the Cathedral in the autumn to share ideas and learn from one another's efforts to protect the environment.

In May, we launched a new Biodiversity Volunteer Team to support the Cathedral's work in land management and the promotion of biodiversity. The group has quickly become both popular and productive, already achieving a great deal, including planting 12 Cambridgeshire varieties of apple trees and introducing additional hedging plants, building on a project first started by younger members of the Cathedral community.

It is also encouraging to report that, eight years on, Cathedral volunteers of all ages continue to gather on the first Saturday of each month alongside friends from Ely Methodist Church, a fellow Eco Church, to litter-pick and help care for the local environment.

In conjunction with the Learning Department and Shepreth Hedgehog Hospital, we held a Discovery Morning educating children and adults on the importance of hedgehogs and their care. We continue to support these small mammals by supplying water, areas for hibernation and hedgehog highways.



Hedgehog Discovery Morning

The Cathedral community continued to get involved with citizen science projects such as the RSPB's Big Garden Birdwatch and The Big Hedgehog Map.

The third annual Environment Memorial Lecture was given by Dr Hilary Marlow, a trustee of A Rocha International and a Fellow of Girton College, Cambridge. She highlighted the global and social injustices of climate change but also spoke of hope for the environment that comes from actions, however small or large, taken by all of us.



Planting apple trees

The newly established Biodiversity Team has begun constructing a dead hedge, blending practical function with ecological value. This initiative not only supports biodiversity but also creates habitats for wildlife, recycles organic materials, and improves soil health.



The dead hedge

Funders and Supporters

As a charity the Cathedral is so grateful for your support. Unlike museums and arts organisations, the Cathedral receives no regular government funding.

Thanks to a generous grant from the Friends of Ely Cathedral and a local Charitable Trust, essential conservation and repair to the high altar reredos took place in the Autumn, ensuring it continues to shine as a centrepiece of worship and heritage.

Funding from The Cathedral Music Trust towards chorister singing lessons, helped support the children's musical education and development in 2025. Whilst a further gift from the Benefact Trust, helped strengthen our Cathedral learning programme for schools, home educators, families and the wider community.

Securing funding for future projects remains a key priority. Thanks to a major grant from the Archbishops' Council, alongside a grant from Ely Cathedral Trust, an air source heat pump was installed at the Almonry Kitchen. It is estimated that this will lead to around a 5% reduction in carbon use for the Cathedral site as a whole – helping us confidently move forward on our path to Carbon Net Zero.

We would like to extend our heartfelt thanks to all trusts, foundations, and supporters whose kindness makes these projects possible.

Leave a gift in your will

When the time is right to remember a charity in your Will, please remember Ely Cathedral Trust. Charity number: 264803.

Just like Diane who kindly left a gift in her Will for the benefit of Cathedral music, in memory of her and her husband Bill. A gift like this helps keep the joy of choral music alive - those soaring voices that lift the heart, and the moments of stillness and wonder. Your kindness helps future generations feel that same magic, ensuring the music of Ely Cathedral continues to inspire, comfort, and bring people together for years to come.

By leaving a gift in your will, you can choose to support the work of Ely Cathedral that is most important to you. Your legacy could support the ongoing maintenance and repair of the Cathedral building, fund the Cathedral's choral traditions and music, inspire the next generation by enabling more children to access the Cathedral's learning programme, or simply be used to support the Cathedral where it is needed the most. Whichever you decide, you can be confident that your gift will be used to make a real difference.

If you would like more information, please call **Gemma O'Shea**, Head of Fundraising, for a confidential discussion
01353 260264, gemma.oshea@elycathedral.org
www.elycathedral.org/leave-a-gift-in-your-will





The Order of St Etheldreda

The Annual Order Luncheon in June was certainly blessed with good weather.

New members are always warmly welcomed. Members enjoy access to exclusive events, free admission, and priority booking and reserved seating at popular Cathedral events and services.

Order membership helps protect this Grade I listed building and nurtures a vibrant programme of music and education. Membership begins at £500 per year and provides essential long-term support for the Cathedral's work and mission.

To all our members - thank you. Your continued support truly makes a difference.

To join, please contact **Gemma**, Head of Fundraising: 01353 260264
gemma.oshea@elycathedral.org,
www.elycathedral.org/order

Ely Cathedral Trust, Established 1992
Registered Charity Number: 264803

The Friends of Ely Cathedral

Alongside a varied and successful programme of events, 2025 was a significant year of change for The Friends. After 16 years of dedicated service, Friends' Officer, Suella Hunting, retired. The Friends remain deeply grateful for everything she has given.

The Cathedral's major lighting project continued to be the primary focus of our financial support throughout the year. In addition, we were delighted to contribute to the superb conservation work on the High Altar Reredos, helping to preserve one of the Cathedral's most treasured features.

We are proud to have around 2,000 members worldwide, and we are always pleased to welcome new Friends into our community. For anyone interested in joining, please contact: **Shelley Bolderson**, Friends' Officer: 01353 660348
friends@elycathedral.org
www.elycathedral.org/friends

The Friends of Ely Cathedral CIO, Established 1936. Registered Charity No: 1157705

The Lantern Choristership Fund

Could you help support a young chorister in the Cathedral Choir?

There has been a Cathedral Choir at Ely for hundreds of years, and the tradition of daily choral music remains at the heart of the Cathedral's work.

Your support will help choristers receive an unrivalled musical education and help ensure the future of Cathedral choral music.

Even £5 a month can help fund a chorister on their musical journey.

"As a family, we have all enjoyed and got so much out of our son's chorister experience, hence our daughter is about to start her journey at Ely in September."
Chorister Parent

Visit www.elycathedral.org/support-us/lantern-choristership for more information.

8,225

Gifts large and small were donated to the Cathedral in 2025

2,837

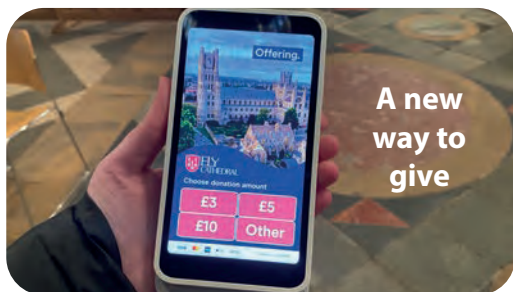
People donated at the same time as booking tickets to one of our special events

2,596

One-off gifts were made using the tap-to-give devices, with almost half enabling the Cathedral to claim Gift Aid on their donation

12

People remembered the Cathedral in their will



Thanks to our wonderful Volunteer Stewards and Vergers, new mobile tap-to-give devices were introduced at services this year.

Since their introduction in May, they have taken more than £5,000 through around 700 gifts - including offerings from visitors across the world.

Thank you!

A Special Thank You

Benefact Trust
Cathedral Music Trust
Chapman Charitable Trust
Ecclesiastical Insurance Group
Ely Grazing Company
EMG Motor Group
Garfield Weston Foundation
Julia Rausing Trust
King's Ely
McCorquodale Charitable Trust
Members of the Order of St Etheldreda
Metcalf Copeman & Pettefar LLP
Miss Helen Isabella McMorran Charitable Foundation
Nicholas and Judith Goodison's Charitable Settlement
Poets House
Simon Gibson Charitable Trust
Tesco Stronger Starts
The Anthony and Elizabeth Mellows Charitable Settlement
The Church Commissioners for England
The Church of England Net Zero Carbon Programme

The Friends of Ely Cathedral
The Giant Wheel Company
The Jack Patston Charitable Trust
The late Miss Ruth Arnold
The late Mr Gordon Ottewell
The late Mr James Tilly
The late Mr John Nash
The late Mr Keith Dolby
The late Mr Stanley Scott
The late Mrs Anne Frost
The late Mrs Diane Barlow
The late Mrs Sheila Heather
The late Ms Christine Farrington
The late Ms Ruth Margaret Davies
The late Mr Richard Slogrove
The late Mr Tony Blyth
The Michael Marks Charitable Trust
The Patrick Rowland Foundation
The Pilling Trust Fund
The Rainbow Dickinson Trust
The Williams Church Music Trust
The Wyss Foundation
Our volunteers, clergy, staff and all who have supported the life and work of the Cathedral.



ELY CATHEDRAL

Ely Cathedral, The Chapter House, The College, Ely, Cambs, CB7 4DL

01353 667735 | www.elycathedral.org

Ely Cathedral - Registered Charity No: 1202546

