

journey.

an activity exploring the refugee
experience.



 **WE SEE YOU.**
THE CLEWER INITIATIVE

journey.

setting up the activity.

First, decide how many groups you will have. Ideally, students should be in groups of 4-5 for this activity. Once you know how many groups you will have, decide how many will be a's, b's and c's. You can have multiple group a's, b's and c's but try to have an even split.

Each group will need 5 different envelopes - one envelope for each stage.

Print the cards for the activity, cut them up and put them in the envelopes as indicated on the sheets.

You should have a set of 5 envelopes for each group a, b and c. You might need extra copies of the stage 5 cards as groups may all make the same decision

running the activity.

1. Get the students into their groups and hand out "passports" and round, blank stickers.
2. Set the scene - explain that they need to imagine that a war has broken out in East Anglia (or your own locality - they need to be able to empathise with the experience so it is useful to use a local scenario), help is on the way. Then, give them the first envelope and let them read the contents. This envelop should contain the stage one card that explains that a truck is on the way to take them to safety along with 5 cards showing the items that they have with them.
3. Give them a few minutes to complete the first part of their "passport". They should put a blank sticker in the first section and then draw a face on the sticker to show how they feel and then write a sentence or two about WHY they feel that way (they will do this at each stage).
4. Tell them that they are about to encounter a problem - give out the stage 2 envelopes. Allow 3 minutes for reading and decision making. Collect the items they have decided to leave behind and allow time for students to fill in the next section of the passport.
5. Again, tell them that they have encountered another problem - give out the stage 3 envelopes. Allow 3 minutes for reading and decision making. Collect the items they have decided to leave behind and allow time for students to fill in the next section of the passport.
6. Explain to them that at the next stage they will need to make a decision. Hand out the stage 4 envelopes and allow 5 minutes for reading and decision making. Allow a few minutes for them to fill in the next section of the passports.
7. Ask them what their decision was and give them the envelope that corresponds to their decision, this will tell them what happened. Allow some time now for them to read and understand what has happened to them and to fill in the final section of their passports.
8. Now, re-group the students so that there is a mix of a's, b's and c's in each group. Hand out the discussion crib sheets and ask the group to choose a spokesperson (if you are doing whole class, oral feedback) who will feedback their ideas to the class. Allow 10 minutes for discussion and then collect feedback - either as a whole class or by collecting the sheets.



journey.

Group A



Stage One

War has broken out in East Anglia and you have to flee your home in the middle of the night. A truck is coming to take you to safety, but there are many others trying to flee too so you can only take the 5 items in this envelope with you.



Stage Three

The mountains that you are trying to cross are steep and treacherous and now it has started to snow. Several of the people who were travelling with you have had to give up on their journey. You need to speed up and get off the mountain as soon as possible. To make sure that you can travel as fast as possible, you'll have to leave one of your items behind on the mountain.



Stage Two

The truck has broken down in the middle of the mountains. The truck cannot be mended and so you will have to continue on foot. There are no main roads and all you have is a map that the driver has given you. You cannot carry all your items and will have to leave one behind in the truck.



Stage Four

You are relieved and excited when you finally reach the coast. There are lots of boats and you are sure that someone will help you and take you to safety once they hear what you have been through. But, the people here aren't helping and you end up staying in a make-shift camp while you decide what to do next. You have three options - what will you do?



Stage Five

Now you will find out the consequences of the choice you made in stage 4. Tell your teacher which option you have chosen and they will give you your final envelope.

journey.

Group B



Stage One

War has broken out in East Anglia and you have to flee your home in the middle of the night. A truck is coming to take you to safety, but there are many others trying to flee too so you can only take the 5 items in this envelope with you.



Stage Three

As your journey continues, the weather changes and it becomes incredibly hot. The river is little more than sludgy mud, which makes it difficult and dangerous to cross because you keep sinking into the silt. There is hardly any fresh water to drink and you are hot and tired all the time. You cannot keep carrying all your items and must leave one behind.



Stage Two

The truck has had to stop, it cannot go any further. The bridge over the river you need to cross is broken and the truck cannot travel along the steep river bank to the next crossing point. You'll have to continue on foot to find somewhere else to try and cross the river. You cannot carry all your items and must leave one behind on the truck.



Stage Four

You are relieved and excited when you finally reach the coast. There are lots of boats and you are sure that someone will help you and take you to safety once they hear what you have been through. But, the people here aren't helping and you end up staying in a make-shift camp while you decide what to do next. You have three options - what will you do?



Stage Five

Now you will find out the consequences of the choice you made in stage 4. Tell your teacher which option you have chosen and they will give you your final envelope.

journey.

Group C



Stage One

War has broken out in East Anglia and you have to flee your home in the middle of the night. A truck is coming to take you to safety, but there are many others trying to flee too so you can only take the 5 items in this envelope with you.



Stage Three

The marshes are a scary place to be, it's hard to find a safe path and your shoes are soaked through. Now the weather has turned bad and it is raining heavily. The water level on the marshes is rising and it is even harder to find a safe path, you are soaked and very cold. You need to be able to move fast to get off the marshes so you must leave one of your items behind.



Stage Two

The truck has a puncture and cannot carry on so you need to continue your journey on foot. You are in the middle of the marshes, it's difficult to see where you are going and where the solid ground is as it is dark and you can't use a torch in case you are spotted. All you have to guide you is a map that the truck driver gave you. You can't carry all your items so you will need to leave one of them on the bus.



Stage Four

You are relieved and excited when you finally reach the coast. There are lots of boats and you are sure that someone will help you and take you to safety once they hear what you have been through. But, the people here aren't helping and you end up staying in a make-shift camp while you decide what to do next. You have three options - what will you do?



Stage Five

Now you will find out the consequences of the choice you made in stage 4. Tell your teacher which option you have chosen and they will give you your final envelope.

journey.

Group A



A watch worth
£50



A family photo
album



A change of
clothes



An iPhone worth
£100



A camping stove
and pot

Cut these images out and place them in the first envelope for group a.

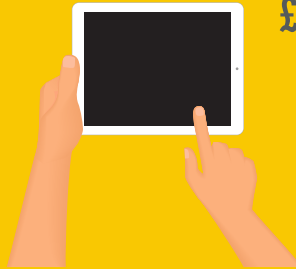
journey.

Group B

A first aid kit



An iPad worth
£150



A family photo
album



A full water
container



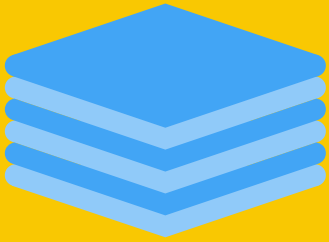
£9,000 in cash

Cut these images out and place them in the first envelope for group b.

journey.

Group C

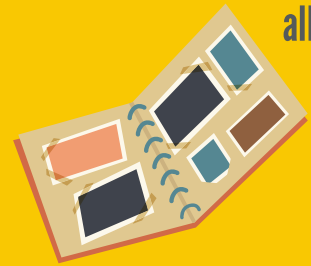
A plastic sheet



Jewellery worth
£5,000



A family photo
album



A basket of food



A laptop worth
£250

Cut these images out and place them in the first envelope for group c.

journey.

Group A

Option One

You are told about a person who can smuggle you out of the country on a boat. The smuggler will provide you and 7 other people with an inflatable dinghy with a motor.

You will need to pay the smuggler £8,000 to go across on the boat. It is a very dangerous journey and you have heard that many people have drowned as the boats have capsized in the rough waters.

If you decide to take this journey you will only be able to take one of your remaining items with you as there is not much room on the boat.

Cut out these boxes and place them in fourth envelope for Group A. They will need to choose one option.

Option Two

A group of people come into the camp, they say they are here to help and that they have an excellent opportunity for you.

They offer to smuggle you out in the back of a lorry. When you arrive in your new country you will be given a job on a potato farm as well as a place to stay and food to eat.

You won't have to pay them anything yet, you can pay them back when you are working in your new country. It won't be a nice journey. You'll be hidden in a small, dark space in the lorry so you won't be able to take any of your items with you.

Option Three

You stay where you are.

You can apply for refuge in another country, but that will take 2-3 years to be finalised and you will have to prove that you would be in danger if you were to go home. You'll need to be able to go to the Embassy to get the paperwork. The Embassy is in the city, 50 miles away. You can get there by bus, but it will cost you £30 for each journey.

You could also try to hide on a lorry going across the border - but this is hard and extremely dangerous.

journey.

Group B

Option One

You are told about a person who can smuggle you out of the country on a boat. The smuggler will provide you and 7 other people with an inflatable dinghy with a motor.

You will need to pay the smuggler £8,000 to go across on the boat. It is a very dangerous journey and you have heard that many people have drowned as the boats have capsized in the rough waters.

If you decide to take this journey you will only be able to take one of your remaining items with you as there is not much room on the boat.

Cut out these boxes and place them in fourth envelope for Group B. They will need to choose one option.

Option Two

A group of people come into the camp, they say they are here to help and that they have an excellent opportunity for you.

They offer to smuggle you out in the back of a lorry. When you arrive in your new country you will be given a job on a potato farm as well as a place to stay and food to eat.

You won't have to pay them anything yet, you can pay them back when you are working in your new country. It won't be a nice journey. You'll be hidden in a small, dark space in the lorry so you won't be able to take any of your items with you.

Option Three

You stay where you are.

You can apply for refuge in another country, but that will take 2-3 years to be finalised and you will have to prove that you would be in danger if you were to go home. You'll need to be able to go to the Embassy to get the paperwork. The Embassy is in the city, 50 miles away. You can get there by bus, but it will cost you £30 for each journey.

You could also try to hide on a lorry going across the border - but this is hard and extremely dangerous.

journey.

Group C

Option One

You are told about a person who can smuggle you out of the country on a boat. The smuggler will provide you and 7 other people with an inflatable dinghy with a motor.

You will need to pay the smuggler £8,000 to go across on the boat. It is a very dangerous journey and you have heard that many people have drowned as the boats have capsized in the rough waters.

If you decide to take this journey you will only be able to take one of your remaining items with you as there is not much room on the boat.

Cut out these boxes and place them in fourth envelope for Group C. They will need to choose one option.

Option Two

A group of people come into the camp, they say they are here to help and that they have an excellent opportunity for you.

They offer to smuggle you out in the back of a lorry. When you arrive in your new country you will be given a job on a potato farm as well as a place to stay and food to eat.

You won't have to pay them anything yet, you can pay them back when you are working in your new country. It won't be a nice journey. You'll be hidden in a small, dark space in the lorry so you won't be able to take any of your items with you.

Option Three

You stay where you are.

You can apply for refuge in another country, but that will take 2-3 years to be finalised and you will have to prove that you would be in danger if you were to go home. You'll need to be able to go to the Embassy to get the paperwork. The Embassy is in the city, 50 miles away. You can get there by bus, but it will cost you £30 for each journey.

You could also try to hide on a lorry going across the border - but this is hard and extremely dangerous.

journey.

Group A

Option One

You pay £8,000 and are put on a dinghy. The dinghy should hold 4 people, but there are 8 of you in it. The smuggler doesn't come with you, just shows one of you how to work the boat and points you in the direction of your new country. The crossing is awful, the sea is rough and it rains heavily. 2 people fall out of the boat and you can't find them. Your one remaining item falls overboard.

When you arrive on the beach there are police everywhere, there is shouting and dogs barking. You are taken to a reception centre, given a bed in a dormitory and will have to wait several months now to find out whether you will be able to stay or whether you will be sent back to East Anglia and the war there.

Cut these options out and put them into different envelopes labelled one, two and three. Give the group the envelope for the option that they chose.

Option Two

The people you met put you and 4 others in the back of a lorry. You have to lay down flat as there is no room to sit up and you must be completely silent throughout the 12 hour journey.

When you arrive at the farm where you will be working, you find you are sharing a single bed with 3 other people and taking it in turns to sleep and work. You are given very little food. You work extremely hard, up to 15 hours a day, digging up, planting and packing potatoes.

You are told that you owe the group who helped you escape £15,000 for the journey and that you will need to work to pay this back. You earn £75 a week, £40 of which is taken back for your room and food. The other £35 goes towards paying your debt, which is growing because of interest. You are now a slave.

Option Three

You can't afford to travel to the Embassy to apply for refuge in a new country.

You are stuck in the make-shift camp. You have no money and have to rely on charities bringing you food and warm clothes in the winter. You can't afford to pay a smuggler to get you out of the country and you can't work since you don't have a work permit.

The group from before often come round and offer to help you get out and find you a job in a new country...

journey.

Group B

Option One

You pay £8,000 and are put on a dinghy. The dinghy should hold 4 people, but there are 8 of you in it. The smuggler doesn't come with you, just shows one of you how to work the boat and points you in the direction of your new country. The crossing is awful, the sea is rough and it rains heavily. 2 people fall out of the boat and you can't find them. Your one remaining item falls overboard.

When you arrive on the beach there are police everywhere, there is shouting and dogs barking. You are taken to a reception centre, given a bed in a dormitory and will have to wait several months now to find out whether you will be able to stay or whether you will be sent back to East Anglia and the war there.

Cut these options out and put them into different envelopes labelled one, two and three. Give the group the envelope for the option that they chose.

Option Two

The people you met put you and 4 others in the back of a lorry. You have to lay down flat as there is no room to sit up and you must be completely silent throughout the 12 hour journey.

When you arrive at the farm where you will be working, you find you are sharing a single bed with 3 other people and taking it in turns to sleep and work. You are given very little food. You work extremely hard, up to 15 hours a day, digging up, planting and packing potatoes.

You are told that you owe the group who helped you escape £15,000 for the journey and that you will need to work to pay this back. You earn £75 a week, £40 of which is taken back for your room and food. The other £35 goes towards paying your debt, which is growing because of interest. You are now a slave.

Option Three

You can't afford to travel to the Embassy to apply for refuge in a new country.

You are stuck in the make-shift camp. You have no money and have to rely on charities bringing you food and warm clothes in the winter. You can't afford to pay a smuggler to get you out of the country and you can't work since you don't have a work permit.

The group from before often come round and offer to help you get out and find you a job in a new country...

journey.

Group C

Option One

You pay £8,000 and are put on a dinghy. The dinghy should hold 4 people, but there are 8 of you in it. The smuggler doesn't come with you, just shows one of you how to work the boat and points you in the direction of your new country. The crossing is awful, the sea is rough and it rains heavily. 2 people fall out of the boat and you can't find them. Your one remaining item falls overboard.

When you arrive on the beach there are police everywhere, there is shouting and dogs barking. You are taken to a reception centre, given a bed in a dormitory and will have to wait several months now to find out whether you will be able to stay or whether you will be sent back to East Anglia and the war there.

Cut these options out and put them into different envelopes labelled one, two and three. Give the group the envelope for the option that they chose.

Option Two

The people you met put you and 4 others in the back of a lorry. You have to lay down flat as there is no room to sit up and you must be completely silent throughout the 12 hour journey.

When you arrive at the farm where you will be working, you find you are sharing a single bed with 3 other people and taking it in turns to sleep and work. You are given very little food. You work extremely hard, up to 15 hours a day, digging up, planting and packing potatoes.

You are told that you owe the group who helped you escape £15,000 for the journey and that you will need to work to pay this back. You earn £75 a week, £40 of which is taken back for your room and food. The other £35 goes towards paying your debt, which is growing because of interest. You are now a slave.

Option Three

You can't afford to travel to the Embassy to apply for refuge in a new country.

You are stuck in the make-shift camp. You have no money and have to rely on charities bringing you food and warm clothes in the winter. You can't afford to pay a smuggler to get you out of the country and you can't work since you don't have a work permit.

The group from before often come round and offer to help you get out and find you a job in a new country...

journey.

reviewing your journey.

Which member of the group had the worst experience?

What were the main dangers that you all faced on your journeys?

Why do you think refugees can end up as slaves?

What could have made things better for you on your journey?

